

OPERATING HOURS

Open Daily 9am - 4.30pm
(ticket counter closes at 3.45pm)
Open Daily (except Tuesdays)

ADMISSION FEES (WALK-INS ONLY)

Adult - RM10.00
Children - RM5.00
Senior Citizen (Aged 60 years & above) - RM5.00
Differently Abled - Free
Children below 4 years old - Free

*Combo price available for online purchase only.



Rooftop

Souvenir Shop

Make a stop for some beverages and refreshments before you continue your tour of Penang Hill Gallery@Edgecliff. Sip on some coffee while you enjoy the stunning views of Penang from the top.

A merchandise store primarily selling souvenirs, memorabilia and other items relating to Penang Hill Gallery@Edgecliff.

LOCATION



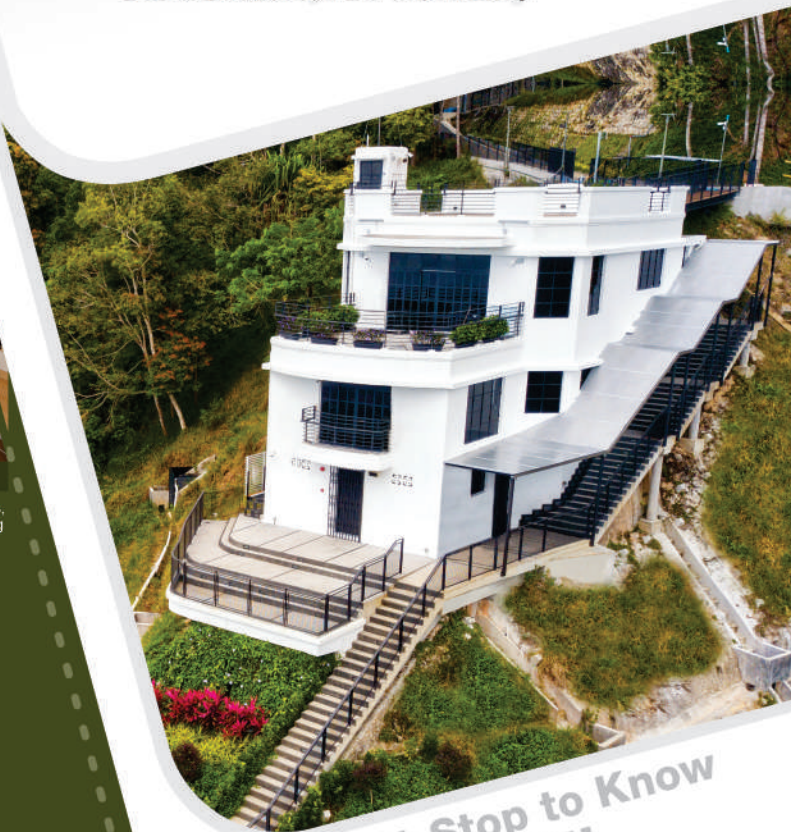
CONTACT US

PENANG HILL CORPORATION / PERBADANAN BUKIT BENDERA PULAU PINANG
Jalan Stesen Bukit Bendera, 11500 Air Itam, Pulau Pinang

Tel: 04-828 8880 / 828 8861 | Fax: 04-828 8868 | Email: edgecliff@penanghill.gov.my



"See the Nature, Feel the History"



A Must-Stop to Know
Penang Hill



Penang Hill

mypenanghill

mypenanghill

www.penanghill.gov.my

https://edgecliff.penanghill.gov.my

A BRIEF HISTORY OF PENANG HILL GALLERY @EDGECLIFF

The idea of establishing Penang Hill Gallery@Edgecliff was first initiated in 2019 by the Penang State Government and Penang Hill Corporation. Edgecliff Bungalow (originally Braeside) was built in 1937 by Scottish architect J.C. Miller (1901-1988). It is distinctively perched on a cliff and is best described as a "box-like house that employs a severe Art Deco aesthetic".

It was an exceptionally modern piece of architecture, way ahead of its time. There is no question that Edgecliff Bungalow was designed to be a show stopper; its enduring form and structure have withstood the limitations of time. It stands majestically and imposingly from every corner of the bungalow giving dramatic views over Penang and Beyond.



Today, Edgecliff Bungalow is reintroduced to the world as Penang Hill Gallery@Edgecliff. It has been carefully preserved and conserved; great extents have gone into ensuring that the building never loses its sense of original character, personality and identity.

The Penang State Government and Penang Hill Corporation have restored it into an information and education centre (the first of its kind on Penang Hill) for visitors from all over the world, especially for train enthusiasts, art lover, history buffs, researchers and the intellectually curious.



TIME TUNNEL

Discover the past and nostalgia of Penang Hill from the Time Tunnel that displays rare visuals taken during the Straits Settlement era. Do not miss the opportunity for photography here!



BIODIVERSITY

Penang Hill is home to more than 2,500 species of flora and fauna from lush plants (Monkey Cup) to adorable animals (Dusky Langur).

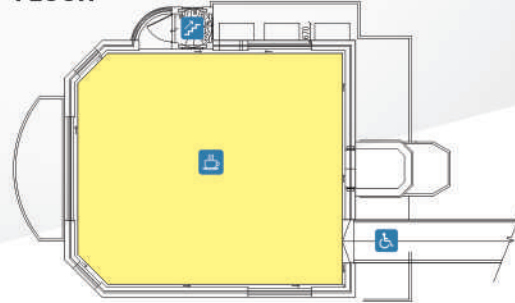


FUNICULAR

Learn about the history of the three different generations of funicular on Penang Hill. Among the highlights of the gallery is the interactive Funicular model, which depicts the mechanism and engineering behind the funicular train's motion and movements.

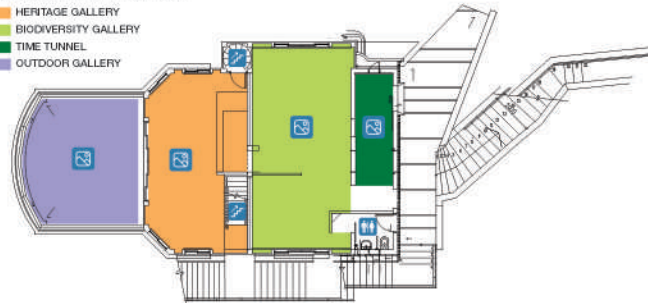
ROOFTOP FLOOR

KIOSK



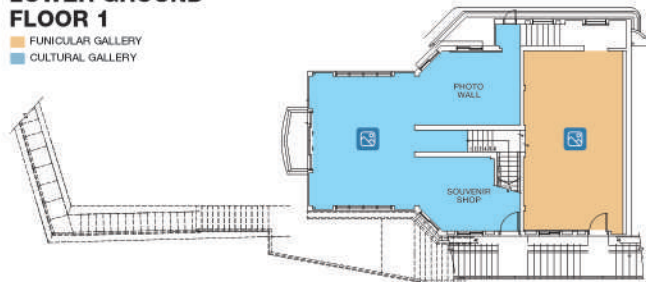
GROUND FLOOR

HERITAGE GALLERY
BIODIVERSITY GALLERY
TIME TUNNEL
OUTDOOR GALLERY



LOWER GROUND FLOOR 1

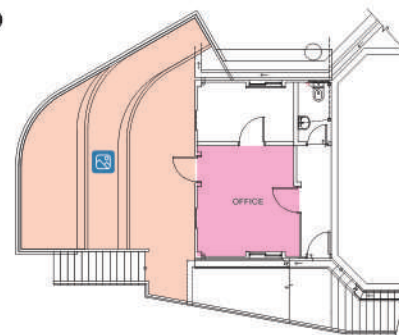
FUNICULAR GALLERY
CULTURAL GALLERY



LOWER GROUND FLOOR 2

THE VIEW
OFFICE

Legends
Wheelchair Access
Attraction / Gallery
Restroom
Staircase
Café
Souvenir Shop



GALLERIES & EXHIBITIONS

Penang Hill Gallery@Edgecliff transports you through time and space, showcasing a comprehensive collection of photographs and stories throughout the five galleries, i.e., Time Tunnel, Biodiversity, Heritage, Funicular and Cultural.



HERITAGE

This gallery showcases Penang Hill's historical and community buildings and 52 majestic, timeless bungalows from those built in the late 1700s until the late 1900s.



CULTURAL

This gallery celebrates the collection of images of the community and people that have been living on Penang Hill from the 1950s until today.