

OPERATING HOURS

Open Daily 9am - 4.30pm

Close on Tuesday

(ticket counter closes at 3.45pm)

ADMISSION FEES (WALK-INS ONLY)

Adult - RM10.00

Children - RM5.00

Senior Citizen (Aged 60 years & above) - RM5.00

Differently Aabled - Free

Children below 4 years old - Free



"See the Nature, Feel the History"

A BRIEF HISTORY OF PENANG HILL GALLERY @EDGECLIFF

The idea of establishing Penang Hill Gallery@Edgecliff was first initiated in 2019 by the Penang State Government and Penang Hill Corporation. Edgecliff Bungalow (originally Braeside) was built in 1937 by Scottish architect J.C.Miller (1901-1988). It is distinctively perched on a cliff and is best described as a "box-like house that employs a severe Art Deco aesthetic".

It was an exceptionally modern piece of architecture, way ahead of its time. There is no question that Edgecliff Bungalow was designed to be a show stopper; its enduring form and structure have withstood the limitations of time. It stands majestically and imposingly from every corner of the bungalow giving dramatic views over Penang and Beyond.



Rooftop

Souvenir Shop

Make a stop to the iconic Rooftop of the gallery and enjoy the magnificent view of Penang from above!

A merchandise store primarily selling souvenirs, memorabilia and other items relating to Penang Hill Gallery@Edgecliff.

LOCATION



CONTACT US

PENANG HILL CORPORATION / PERBADANAN BUKIT BENDERA PULAU PINANG
Jalan Stezen Bukit Bendera, 11500 Air Itam, Pulau Pinang

Tel: 04-828 8880 / 828 8861 | Fax: 04-828 8868 | Email: edgecliff@penanghill.gov.my



A Must-Stop to Know Penang Hill



[f Penang Hill Gallery Edgecliff](https://www.facebook.com/PenangHillGalleryEdgecliff)

[i penanghill_galleryedgecliff](https://www.instagram.com/penanghill_galleryedgecliff)

www.penanghill.gov.my

<https://edgecliff.penanghill.gov.my>



Today, Edgecliff Bungalow is reintroduced to the world as Penang Hill Gallery@Edgecliff. It has been carefully preserved and conserved; great extents have gone into ensuring that the building never loses its sense of original character, personality and identity.

The Penang State Government and Penang Hill Corporation have restored it into an information and education centre (the first of its kind on Penang Hill) for visitors from all over the world, especially for train enthusiasts, art lover, history buffs, researchers and the intellectually curious.



TIME TUNNEL

Discover the past and nostalgia of Penang Hill from the Time Tunnel that displays rare visuals taken during the Straits Settlement era. Do not miss the opportunity for photography here!



BIODIVERSITY

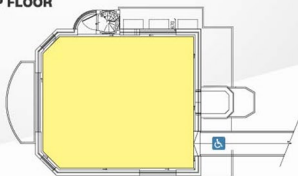
Penang Hill is home to more than 2,500 species of flora and fauna from lush plants (Monkey Cup) to adorable animals (Dusky Langur).



FUNICULAR

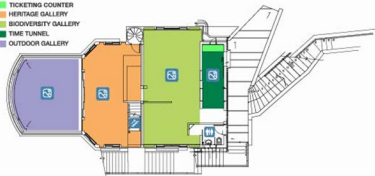
Learn about the history of the three different generations of funicular on Penang Hill. Among the highlights of the gallery is the interactive Funicular model, which depicts the mechanism and engineering behind the funicular train's motion and movements.

ROOFTOP FLOOR



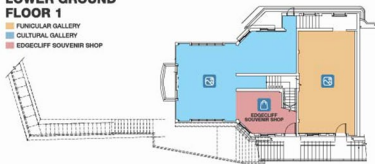
GROUND FLOOR

- TICKETING COUNTER
- HERITAGE GALLERY
- BIODIVERSITY GALLERY
- TIME TUNNEL
- OUTDOOR GALLERY



LOWER GROUND FLOOR 1

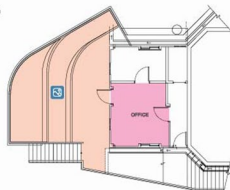
- FUNICULAR GALLERY
- CULTURAL GALLERY
- EDGECLIFF SOUVENIR SHOP



LOWER GROUND FLOOR 2

- EDGECLIFF TERRACE
- OFFICE

- Legends
- Wheelchair Access
 - Attraction / Gallery
 - Restroom
 - Staircase
 - Edgecliff Souvenir Shop



GALLERIES & EXHIBITIONS

Penang Hill Gallery@Edgecliff transports you through time and space, showcasing a comprehensive collection of photographs and stories throughout the five galleries, i.e., Time Tunnel, Biodiversity, Heritage, Funicular and Cultural.



HERITAGE

This gallery showcases Penang Hill's historical and community buildings and 52 majestic, timeless bungalows from those built in the late 1700s until the late 1900s.



CULTURAL

This gallery celebrates the collection of images of the community and people that have been living on Penang Hill from the 1950s until today.